

# Kaptive Beam Decking System Boosts Trailer Load Capacity

Kaptive Beam Systems from Kinedyne utilize an aluminum beam extrusion with a special head assembly that moves within a vertical aluminum track section. When not in use, the Kaptive Beam can be raised to ceiling level for storage. The design of the track allows for easy installation in most trailer configurations and its low profile reduces snagging by forklifts.

**⚠ WARNING:** Kinedyne Kaptive Beams and Kinedyne Kaptive Beam Track are components of a designed system. The use of components other than genuine Kinedyne Kaptive Beam products could result in system failures and void the warranty. Do not overload beams or create a top-heavy, unstable trailer.



Standard palletized cargo loaded in traditional fashion



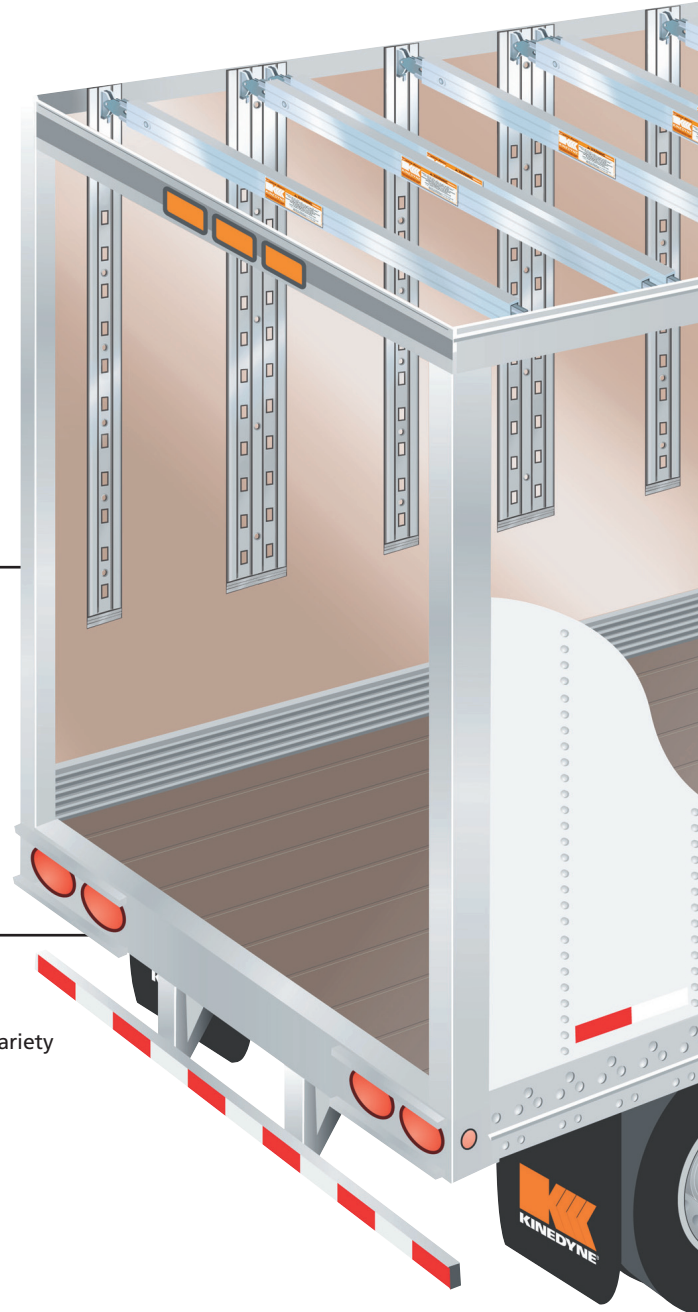
Same palletized cargo loaded with Kaptive Beam

## SYSTEM BENEFITS

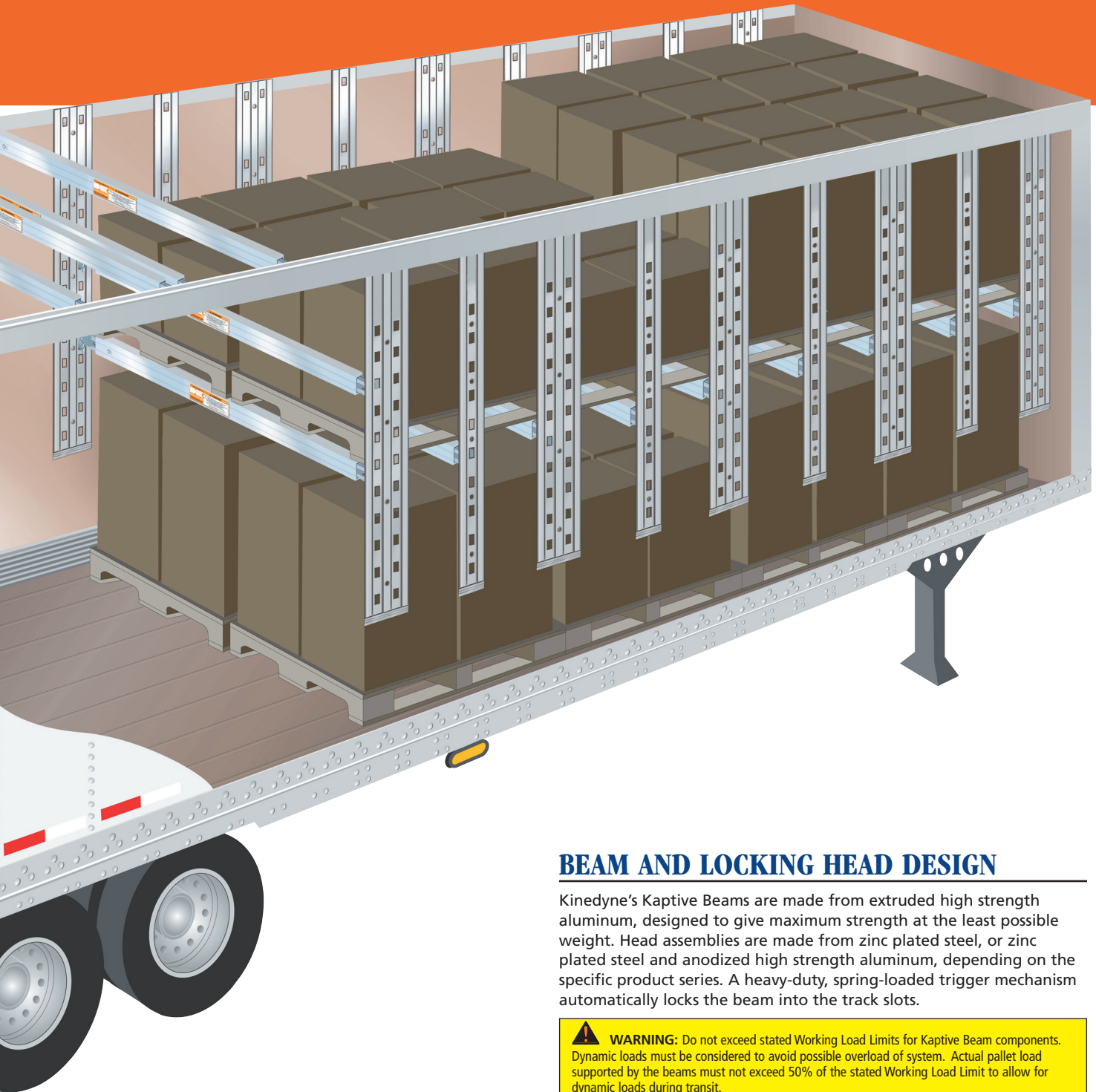
- Optimizes efficiency and use of trailer cube
- Designed for quick and easy adjustment
- Helps improve profitability by reducing claims related to damaged freight
- Suitable for both decking and shoring applications
- Convenient storage at ceiling level provides optimum flexibility, while deterring loss and/or theft
- Facilitates quick loading & unloading

Kaptive Beam Systems can pay for themselves in as little as three hauls.

System versatility allows customers to optimize the usable trailer cube for a variety of different applications.



# by Up To 100%



## BEAM AND LOCKING HEAD DESIGN

Kinedyne's Kaptive Beams are made from extruded high strength aluminum, designed to give maximum strength at the least possible weight. Head assemblies are made from zinc plated steel, or zinc plated steel and anodized high strength aluminum, depending on the specific product series. A heavy-duty, spring-loaded trigger mechanism automatically locks the beam into the track slots.

**⚠ WARNING:** Do not exceed stated Working Load Limits for Kaptive Beam components. Dynamic loads must be considered to avoid possible overload of system. Actual pallet load supported by the beams must not exceed 50% of the stated Working Load Limit to allow for dynamic loads during transit.



## K2 KAPTIVE BEAM SYSTEM

### K2: The Second Generation of Kaptive Beam Systems

#### K2 KAPTIVE BEAMS



##### 9075-102HD

Adjusts from: 97.0" to 107.0" for 102" trailers  
Weight: 22.5 lbs./10.2 kgs.

Decking/Vertical Rating: 3,000 lbs./1360 kgs.  
Shoring/Horizontal Rating: 2,500 lbs./1133 kgs.

##### 9075-102WF1

Adjusts from: 97.0" to 107.0" for 102" trailers  
Weight: 29.7 lbs./13.45 kgs.

Decking/Vertical Rating: 3,335 lbs./1511 kgs.

##### 9075-96

Adjusts from: 90.0" to 100.0" for 96" trailers  
Weight: 19.0 lbs./8.6 kgs.

Decking/Vertical Rating: 2,200 lbs./1000 kgs. working load limit based on evenly distributed load.  
Shoring/Horizontal Rating: 1,500 lbs./681 kgs. working load limit based on evenly distributed load.

##### 9075-102

Adjust from: 97.0" to 107.0" for 102" trailers  
Weight: 20.6 lbs./9.3 kgs.

#### REPLACEMENT PARTS FOR K2 KAPTIVE BEAM SYSTEMS



##### 9085-20

Beam Head Assembly Complete  
Weight: 4.5 lbs./2.0 kgs.



##### 80022-001

Locking Head  
Weight: 0.5 lbs./0.2 kgs.



##### 16111-114

Head Insert  
Weight: 4.0 lbs./1.8 kgs.



##### 80168-11

Nut  
Weight: 0.07 lbs./0.032 kgs.

##### 80168-10

Bolt  
Weight: 0.035 lbs./0.016 kgs.

#### SINGLE FLANGED K2 TRACK SURFACE-MOUNTED

2071-084 – Sheet & Post mount

Material: High-Strength Aluminum Alloy  
Minimum Yield: 37,000 psi

Weight: 4.5 lbs./2.04 kgs.  
Length: 7.0 ft./2.14 m.



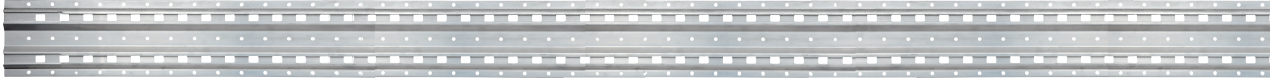
**Kinedyne offers a five year warranty on all K2 Kaptive Beam Systems and Components.**

**DOUBLE FLANGED K2 TRACK SURFACE-MOUNTED**

2072-084 – Sheet & Post mount

Material: High-Strength Aluminum Alloy  
Minimum Yield: 37,000 psi

Weight: 8.9 lbs./4.03 kgs.  
Length: 7.0 ft./2.14 m.



**SINGLE K2 TRACK – NO FLANGE RECESSED-MOUNTED**

2073-084

Material: High-Strength Aluminum Alloy  
Minimum Yield: 35,000 psi

Weight: 2.58 lbs./1.17 kgs.  
Length: 7.0 ft./2.14 m.



**BEAM STOP AND BEVELED END CAPS FOR SURFACE-MOUNTED K2 TRACK**

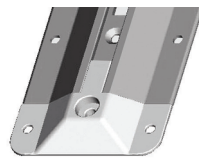
Beveled end caps captivate the beams and protect the track during loading and unloading.



**80097**  
Beam Stop

Weight: 0.089 lbs./0.04 kgs.

NOTE: Can be used for surface or recessed-mounted track



**2071CAP**  
Single Flanged End Cap

Dimensions: 4" x 2.6"  
Weight: 0.15 lbs./0.07 kgs.

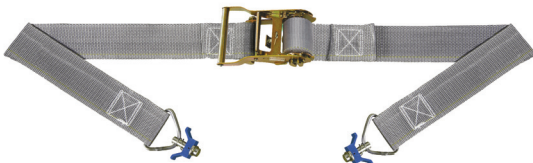


**2072CAP**  
Double Flanged End Cap

Dimensions: 6.5" x 2.6"  
Weight: 0.3 lbs./0.1 kgs.

**LOGISTIC STRAPS FOR K2 KAPTIVE BEAM SYSTEMS**

Logistics straps are designed for use with K2 Kaptive Beam Systems.



**6416B8**  
2" Logistic Strap x 16' with 811 Ratchet Buckle and 80112 Single Stud Fittings with D-Rings  
Working Load Limit: 1,000 lbs./ 454 kgs.



**6516B8**  
2" Logistic Strap x 16' with 910 Cam Buckle and 80112 Single Stud Fittings with D-Rings  
Working Load Limit: 835 lbs./ 380 kgs.



## ORIGINAL KAPTIVE BEAM SYSTEM

### K1: The Original Kaptive Beam System

#### K1 KAPTIVE BEAMS



**9100-96C** – For 96" Trailers  
Adjusts from: 90" to 100"  
Weight: 23.1 lbs./10.5 kgs.

**9100-102C** – For 102" Trailers  
Adjusts from: 97" to 107"  
Weight: 24.1 lbs./11.0 kgs.

**9100-102HDC**  
Adjusts from: 97" to 107"  
Weight: 22.5 lbs./10.2 kgs.

**9100-102CWF1**  
Adjusts from: 97" to 107"  
Weight: 29.7 lbs./13.5 kgs.

#### REPLACEMENT PARTS FOR K1 KAPTIVE BEAM SYSTEMS



**8694-31**  
Beam Head Assembly Complete  
Weight: 4.80 lbs./2.17 kgs.



**8694-30**  
Locking Head  
Weight: 1.60 lbs./0.72 kgs.



**80094-114**  
Head Insert  
Weight: 4.80 lbs./0.72 kgs.



**80168-11**  
Nut  
Weight: 0.07 lbs./0.032 kgs.

**80094-012**  
K1 Series Head Installation Hardware Kit – Screw, nut & bushing  
to attach Locking Head (8694-30) to Tube Insert (80094-114)  
Weight: 0.25 lbs./0.01 kgs.

**80168-10**  
Bolt  
Weight: 0.035 lbs./0.016 kgs.

#### SINGLE ROW FLANGED K1 TRACK

Alternating "A" track slots and Kaptive Beam locking slots create a very versatile installation. The Kaptive Beam will lock into either shaped slot, while logistic straps and standard "E" beams may be used for additional load restraint.

**2055-084D**

Material: 6005T5 aluminum  
Minimum Yield: 37,000 psi.

Weight: 6.265 lbs./2.84 kgs.  
Length: 7 ft./2.134 m



#### DOUBLE ROW FLANGED K1 TRACK

Alternating "A" track slots and Kaptive Beam locking slots create a very versatile installation. The Kaptive Beam will lock into either shaped slot, while logistic straps and standard "E" beams may be used for additional load restraint.

**2056-084D**

Material: 6005T5 aluminum  
Minimum Yield: 37,000 psi.

Weight: 12 lbs./5.44 kgs.  
Length: 7 ft./2.134 m



